



QuadView UHD FIRMWARE UPDATES

From time to time, RGB Spectrum updates product firmware to add new features or improve product performance.

To check for firmware updates for your RGB Spectrum product, visit the [Partner Portal](https://rgb.com/partners/) section of our web site (rgb.com/partners/). (Registration and log-in are required.) Then, select **Product Firmware**.

To determine your current firmware version number, do either of the following:

- Using the *QuadView UHD* Web Controller, select **Advanced** (the firmware and Web Controller versions appear at the bottom of the page); or

Firmware Version: RGB 2.0.0.P CL1142

WebGUI Version: 1.09 CL1039

- Send the ASCII command `ATM 08 CSW_VER W` from a PC or other controller via the LAN or RS-232 interface.

Updating the *QuadView UHD* Firmware

To update your *QuadView UHD* firmware:

1. Copy the update file **MERGE.bin** to the root directory of a USB drive.
2. Connect the USB drive to the USB port on the *QuadView UHD* rear panel.
3. Connect an HDMI display to the *QuadView UHD*.
4. Turn on the *QuadView UHD*. The display device displays the HDMI output signal after normal boot of the device.
5. Press and hold the **INPUT 1** button for at least five seconds;
– OR –

Send the ASCII command `ATM 09 SYS_UPT W 1` from a PC or other controller via the LAN or RS-232 interface.

To indicate a firmware update in progress, **System is upgrading...** appears on the display device, and all of the front-panel button indicators blink.

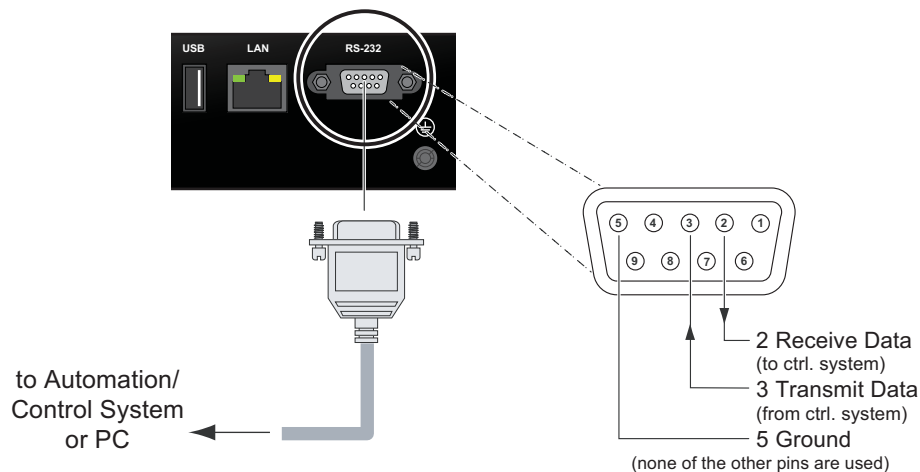


6. After approximately 90 seconds, the *QuadView UHD* reboots automatically. After it finishes rebooting, turn off the unit using the rear-panel power switch.
7. When the front-panel indicators turn off (indicating a full power-down state), restart the *QuadView UHD*. The firmware update is complete.

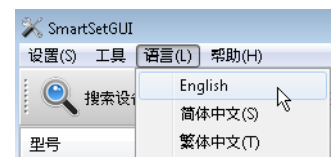
Updating the *QuadView UHD* Web Controller (WebGUI)

To update the *QuadView UHD* Web Controller:

1. Connect an RS232 cable to the control PC and the *QuadView UHD*.



2. Connect an HDMI display to the *QuadView UHD*.
3. Turn on the *QuadView UHD*. The display device displays the HDMI output signal after normal boot of the device.
4. Launch the SmartSetGUI application.
5. The SmartSetGUI interface supports three languages: Traditional Chinese (繁体中文), Simplified Chinese (简体中文), and English. When you launch SmartSetGUI for the first time, the interface appears in Simplified Chinese, the default language. To change it to English, select **English** from the third menu from the left ("语言(L)").



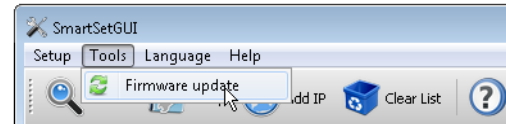
6. Click **OK**.



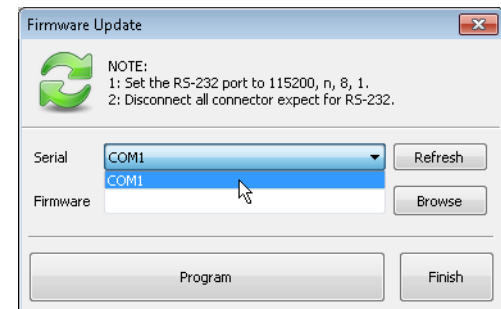
7. Exit SmartSetGUI.



8. Restart SmartSetGUI.
9. Select **Tools > Firmware update**.

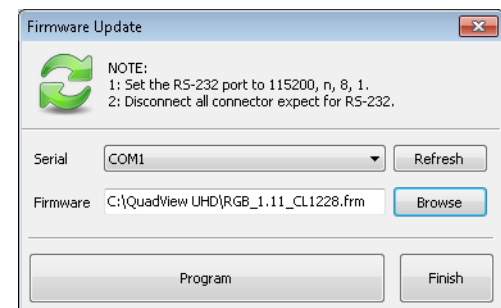


10. Choose the Serial (COM) port to use for updating.

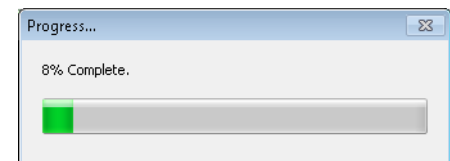


11. Click **Browse** and navigate to the location of the Web Controller firmware update file (for example, **RGB_1.11_CL1228.frm**).

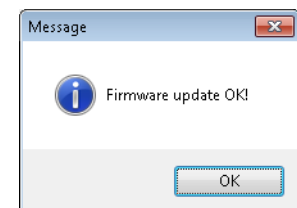
12. Click **Program**.



During the update, SmartSetGUI displays the update progress.



13. When the **Firmware update OK!** message appears, click **OK**.



14. Click **Finish**.
15. Exit SmartSetGUI.
16. Turn off the unit using the rear-panel power switch.
17. When the front-panel indicators turn off (indicating a full power-down state), restart the *QuadView UHD*. The *QuadView UHD* Web Controller update is complete.