



# Zio W4008 Series Video Wall Processors

**The Zio® W4008 wall processors offer advanced AV-over-IP and KVM-over-IP capabilities in a compact 1RU chassis.**

The Zio W4008 series is a compact yet powerful wall processor capable of driving up to 8x 4k60 or 2x 8k60 displays. This series expands RGB Spectrum's AV-over-IP product family with a full-function video wall processor in a more compact 1RU chassis.

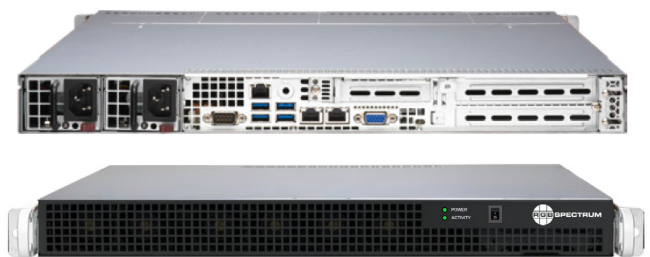
The processor can be used standalone or as part of a Zio AV-over-IP system. The Zio W4008 includes all the functionality of the feature-rich Zio W4000 series, supporting a mix of local baseband, IP video (including *XtendPoint* sources), and web-based inputs.

The powerful drag-and-drop Zio GUI provides quick and easy configuration of the video wall, eliminating the need for advanced device programming skills. Live thumbnail previews of baseband and Zio IP sources, as well as user-defined presets for layouts and routing, are among the many easy-to-use features.

The versatile Zio W4008 is ideal for standalone or enterprise-wide applications, including security operations centers, command and control operations, and other mission-critical environments.

The Zio platform delivers reliable distribution and display of AV content across WANs and LANs using standard Gigabit Ethernet. The Zio product family includes encoders, decoders, multiviewers, wall processors, and a mobile app that supports mobile phones and tablets.

Four models are offered, each with different I/O, as detailed on the specifications page. Especially noteworthy is the integration with RGB Spectrum's *XtendPoint* KVM-over-IP system (model W4008-C), which connects the video wall with a facility's operator console.



## Key Features

- 1RU chassis minimizes rack space
- Supports a mix of baseband, IP video and web-based content
- Inputs (baseband): Up to 4k60
- Outputs: Up to 8k60
- Support for *XtendPoint*™ streams (W4008-C)
- Operates standalone or as part of an AV-over-IP system
- Highly intuitive drag and drop GUI
- Made in the U.S.A., and fully TAA- and BAA-compliant

# Specifications for W4008 Models

Preconfigured Models		W4008-A	W4008-B	W4008-C
Number of Inputs		0	4x	4x
Number of Outputs		8x	4x	4x
Supported Streaming Content		H.264, H.265, VP9	H.264, H.265, VP9	H.264, <i>XtendPoint</i>
2k30 Decode Capability		30x H.264 Streams	30x H.264 Streams	30x H264 + 10x <i>XtendPoint</i> Streams
Max Input Timing		Up to 4k60	Up to 4k60	Up to 4k30
Max Output Timing		Up to 8k60 (two per chassis)	Up to 8k60 (one per chassis)	Up to 8k60 (one per chassis)
ENVIRONMENTAL				
Operating Temp		• +50 to +95 °F (+10 to +35 °C)		
Operating Humidity		• 8% to 90% non-condensing		
Non-Operating Temp		• -40 to +140 °F (-40 to +60 °C)		
Non-Operating Humidity		• 5% to 95% non-condensing		
PHYSICAL				
Size (H x W x D)		• 1.7 x 17.2 x 16.9 in (1U); 44.5 x 436.88 x 429.3 mm		
Weight (Net Weight)		• 11 lbs / 4.99 kg		
Power		• 100-240 VAC; 50/60 Hz; 625 W ( <i>actual power consumption depends on specific model</i> )		



RGB Spectrum HQ: 1-510-814-7000 • Contact us to learn more: [rgb.com/contact](https://rgb.com/contact).

1101 Marina Village Pkwy, Suite 101 • Alameda, CA 94501