

Why Invest in an *XtendPoint* KVM Solution



An operator's console typically accommodates multiple computers, each with its own monitor, keyboard, and mouse, an arrangement that can adversely affect focus and reaction time. The limitations of traditional workflows create a compelling need for improvement.

RGB Spectrum's *XtendPoint*™ KVM-over-IP extenders deliver a scalable KVM matrix solution connecting multiple users with controllable systems.

Here are six reasons why you should switch to RGB Spectrum's *XtendPoint* KVM.

01 Elevated User Experience

- *XtendPoint* offers a better user experience, giving users the impression of operating a single computer rather than several. It replaces multiple displays, keyboards, and mice with 1- or possibly 2-large format multiviewers operated by a single keyboard and mouse, with easy-to-use navigation across and between displays.

02 Reduced Workspace Noise, Clutter, and Heat

- Allowing you to transfer computers from the desk to the IT closet, *XtendPoint* reduces clutter, heat, and noise at the operator's console while making it easier to manage IT operations and enhance security.

03 Sharing and Collaboration

- *XtendPoint* allows all inputs to be viewed and controlled simultaneously by operators, supervisors, and trainers.

04 Failure Mitigation

- In the event of a computer failure, users can switch to a spare PC imaged identically.

05 Remote, Back Up, and Home Use

- With *XtendPoint*, all source computers can be available via a LAN, WAN, or VPN to a remote site, even a home office.

06 System Integration and Scalability

- *XtendPoint* allows easy integration with other users and systems, including video walls. It is easily scalable to include other stakeholders, local or remote.

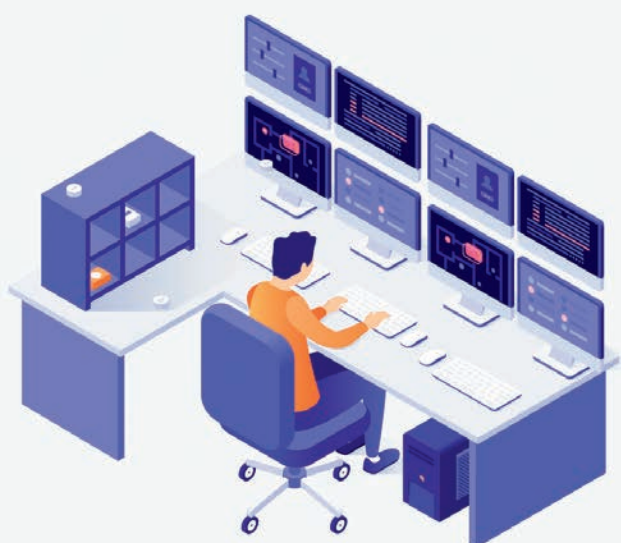
Reimagining the Workspace



Attention to ergonomics is critical for operator efficiency. Operator stations often have multiple monitors and control devices to execute separate functions. But multiple display and control devices create clutter and confusion and reduce work efficiency.

The objective is to remove complexity and simplify operations. Our solutions consolidate multiple keyboards and mice with a single keyboard and mouse for all applications, providing simpler, unified control. Improved ergonomics are achieved by replacing multiple single-image displays with a “single pane of glass” or fewer multi-image displays.

The result is improved operational efficiency, streamlined workflow, reduced operator fatigue, and **better decisions, faster.**



A Typical Desktop Workspace

Display at the desktop includes multiple monitors, keyboards and mice controlling individual applications and data streams.



The Desktop Workspace Reimagined

The desktop with one or more multi-image displays, KVM control with a single keyboard and mouse, and unified user interface with simple navigation.

To learn more about RGB Spectrum's KVM solutions, please visit www.rgb.com or contact your regional sales manager.