



Video Wall Display Processor



4K Ready When You Are





4K Wall Processing System with Unsurpassed Power, Security, and Versatility

The *MediaWall*® V is a 4K video wall processor, offering up to 4K resolution I/O and the reliability of a hardware-based architecture with enhanced security.

A true video wall is more than a wall of monitors. It is a continuous multi-screen surface upon which to display graphics and video imagery, seamlessly in scalable windows that can be positioned anywhere on the wall. The *MediaWall* V processor supports monitor, projector, and LED walls.

With a *MediaWall* V processor, you can display a mix of 4K and 2K resolution sources on a wall array of 2K/HD or 4K/UHD display devices. The *MediaWall* V processor's 4K capabilities enable the display of data and visuals in greater detail than ever before – improving situational awareness, assessment and response.

Embedded Architecture for Optimal Security

MediaWall V's embedded architecture offers an incomparable level of operational security. It resists hacking and tampering, protects against intrusion by malware, and avoids the vulnerabilities that PC-based wall processor systems risk.

High Performance Video Processing

The *MediaWall* V processor can display any configuration of window layouts across an integrated, multi-screen array. Windows can be sized and positioned anywhere, within or across screen boundaries, and zoomed in to emphasize details. Signal switching and preset layout recall are fast and seamless.

Each input is displayed in real-time at full color, frame and pixel rates, without common video wall artifacts such as dropped frames or image tearing. The result is superb performance and an enhanced visual experience.

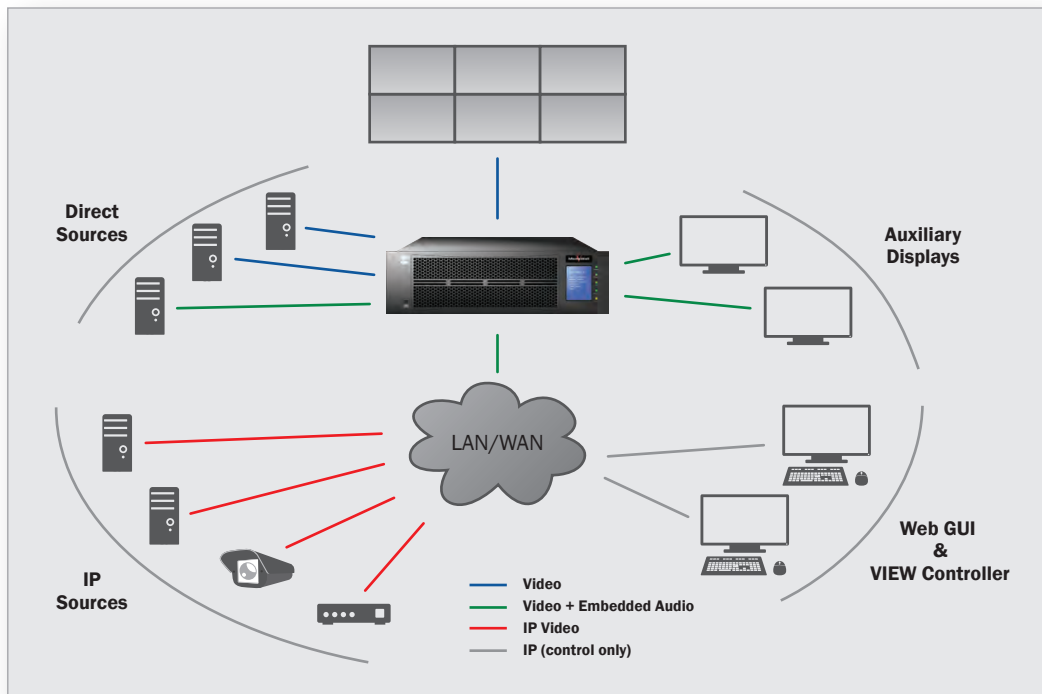
HDCP support allows protected content, such as the output of a Blu-ray player, to be displayed on the video wall.



MediaWall

MediaWall V Topology

The *MediaWall V* processor accepts direct video feeds from computers, cameras and other sources via HDMI at up to 4K resolution. It outputs video to the video wall at up to 4K resolution. Auxiliary video output ports support switched video to additional displays. Control is via Ethernet.



Control Options

The *MediaWall V* processor offers a range of control options. The web-based set-up GUI supports both local and remote access, "drag and drop" window positioning and scaling, wall layout presets, and input selection. In addition, *VIEW™* Controller adds a graphically-enhanced user interface with live thumbnails, providing operators with a very intuitive user interface. The processor can also be controlled by a variety of third-party devices.

For the most demanding applications, the *MediaWall V* processor is compatible with RGB Spectrum's *MultiPoint®* Control Room Management System (*MCMS*)—an innovative hardware and software platform that provides operators with arbitrated keyboard and mouse (KVM) control over system resources.

MCMS is ideal for use in mission-critical control room applications such as command centers, debriefing centers, security operations centers (SOCs), emergency operations centers (EOCs), industrial/process control and SCADA system monitoring. The system's unique design isolates critical systems from the network, effectively protecting sensitive data from external tampering, malware and viruses.



***VIEW™* Controller operation
and control with live thumbnails**

MediaWall

Powerful Capabilities in Control Rooms and Beyond

The *MediaWall V* processor has the ability to power a video wall plus auxiliary monitors or even multiple video walls, making it suitable for the most sophisticated audio-visual environments.

When used with projectors, the processor provides adjustable overlaps for edge-blending to enable immersive, seamless 4K displays that span entire rooms - ideal for museums, theatres, auditoriums and a range of other venues.

There has never been so capable a video wall processor. With 4K resolutions fully supported, the *MediaWall V* processor is ideal for graphically-rich applications like simulation & training, modeling, and high-resolution video surveillance.

Additional Features

- Mullion / bezel compensation
- Up to 60 wall layout presets
- HDCP copy protection compliant
- Up to 6 displayed clocks
- Image overlap for edge blending
- Auxiliary switched outputs
- Borders and labels

Options

- Up to 3 video wall arrays
- Redundant hot-swappable power supply
- *VIEW™ Controller*



COLLABORATE *with your team*

- Connect multiple users
- Display visuals and data
- Control with a computer



VISUALIZE *your data*

- Zoom to view areas of interest
- Display visuals, any size, anywhere



CONTROL *your world*

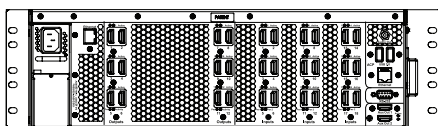
- Arbitrate use of system resources
- Work with remote operations



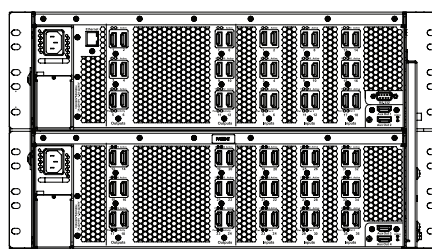
MediaWall V Specifications

	Model 500	Model 550
Inputs		
Number (max)	18	36
Resolution	640x480 @ 85Hz to UHD 3840x2160 @ 30Hz & 4096x2160 @ 24Hz	640x480 @ 85Hz to UHD 3840x2160 @ 30Hz & 4096x2160 @ 24Hz
Connector Type	HDMI 1.4b	HDMI 1.4b
Clock Rate	Up to 330MHz	Up to 330MHz
Color Depth	24-bit	24-bit
Outputs		
Number (max)	12 @ HD/2K, plus 2 auxiliary outputs or 6 @ 4K, plus 2 auxiliary outputs	24 @ HD/2K, plus 4 auxiliary outputs or 12 @ 4K, plus 4 auxiliary outputs
Resolution	Up to 3840x2160 (4K, Ultra HD, UHD) @ 30Hz & 4096x2160 @ 24Hz	Up to 3840x2160 (4K, Ultra HD, UHD) @ 30Hz & 4096x2160 @ 24Hz
Connector Type	Optional accessory supports 3840x2160 (4K) @ 60Hz HDMI 1.4b	Optional accessory supports 3840x2160 (4K) @ 60Hz HDMI 1.4b
Display Windows		
Number (max) Labels	32	64
Characters per label	Up to 64	Up to 64
Font Styles	50	50
International Fonts	Yes	Yes
Border Color Depth	24-bit	24-bit
Physical		
Cable Management	Strain relief bar	Strain relief bar
Size (h x w x d)	5.25 x 19.0 x 23.0 inches (3RU) 133 x 483 x 584 mm	10.5 x 19.0 x 23.0 inches (6RU) 267 x 483 x 584 mm
Weight	40 lbs / 18 kg	82 lbs / 37 kg
Power Supply	Hot plug 850W, 100 - 240 VAC auto ranging 50/60 Hz	Hot plug 850W, 100 - 240 VAC auto ranging 50/60 Hz
Environmental		
Operating Temperature	+41 to +104 °F (5 to +40 °C)	+41 to +104 °F (5 to +40 °C)
Storage Temperature	-4 to +158 °F (-20 to +70 °C)	-4 to +158 °F (-20 to +70 °C)
Operating Humidity	5% to 90% non-condensing	5% to 90% non-condensing
Altitude	Up to 13,123 ft (4000 m) at 104°F (40°C)	Up to 13,123 ft (4000 m) at 104°F (40°C)
Control		
Ethernet 10/100/1000 Base-T, RS-232		
Command line and graphical user interface		
Option: VIEW Controller		
Option: MultiPoint Control Room Management (MCMS)		
Audio		
Auxiliary (AUX) HDMI 1.4b outputs (embedded)		

Specifications subject to change.



Model 500



Model 550



Corporate Headquarters

1101 Marina Village Parkway, Suite 101

Alameda, California 94501

Tel: (510) 814-7000

Web: www.rgb.com

Email: sales@rgb.com

Visit Our Website for Worldwide Offices

