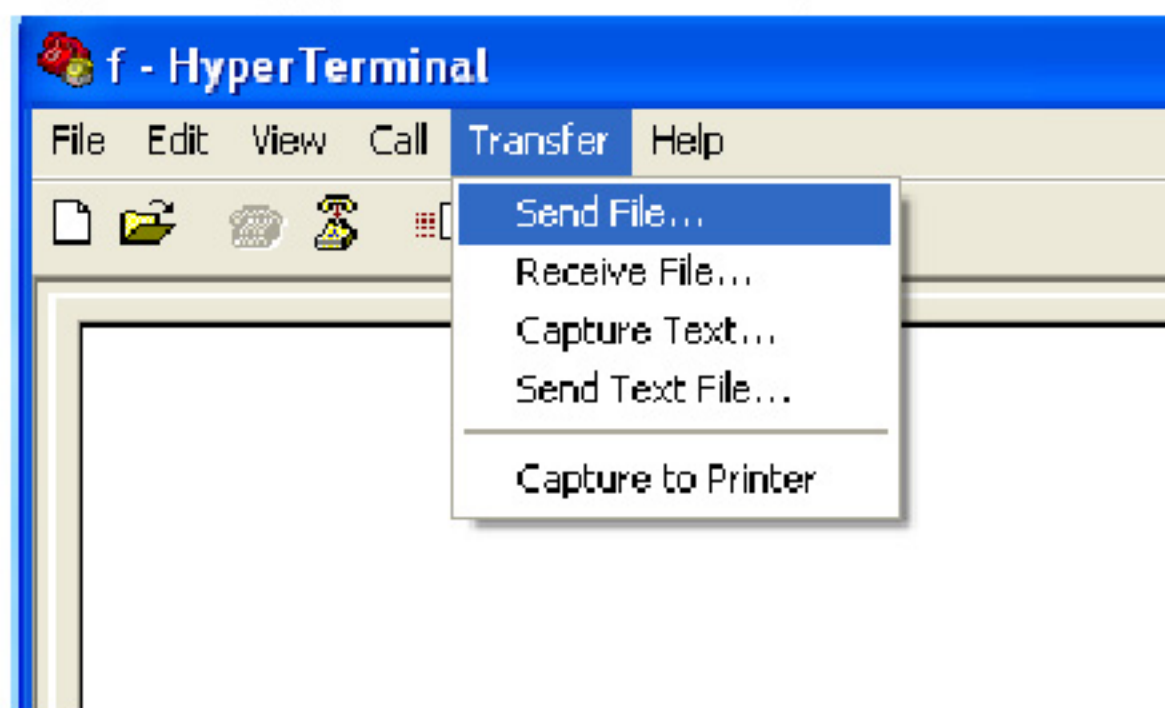


New Timings !

Now adding new output or input settings that is not in our lists is easier than ever.
To add 2 new timings (for 1400X1050 resolutions) just download and save this file. (1400_1500.txt)

Simply connect using Hyperterminal, and select the send file option



The new timings will be automatically uploaded and saved to your unit;

```
Host 110 1400X1050 @60 Hz  
Host 111 1400X1050@ 75Hz
```

Adding these settings will allow output at that setting, as well as recognition of the signal as an input source.