



Linx™ Switcher Firmware Upgrade Procedure

This upgrade procedure is applicable to Linx models 800, 900, 1600, 1700, 3200, and 3300. It is recommended that all system settings be exported and copied to a PC before updating firmware.

Please see the appropriate Linx Switcher User's Guide for PC to Linx connection.

Note

If a serial port connection is available, it is the preferred method of sending commands to the Linx for the upgrade procedure. The serial port supports status messages returned from the Linx during update and rebooting.

1. Determine the current firmware version by one of the following methods:
 - ~ Issue the command **VER** through the serial port or a Telnet window.
 - ~ View the **System** tab of the WCP.
 - ~ On the front panel, touch **SYS** to view the system parameters.
2. Using a browser, download the latest revision of the firmware from the RGB Spectrum web site **Support** section <http://www.rgb.com/Support/> The upgrade is a file named **FWMO_x.y.z.tgz**, where x.y.z represents the version number. The file name is case sensitive. Copy this file onto a local drive on the PC. The use of a broadband connection is highly recommended. Do not rename the file.

Note

Windows Explorer under Windows Vista is used in the following steps. If using a different operating system, the transfer mode must be set to binary before uploading the firmware to the Linx.



3. From the Windows **Start** menu, right click on **Computer** and select **Explore**.

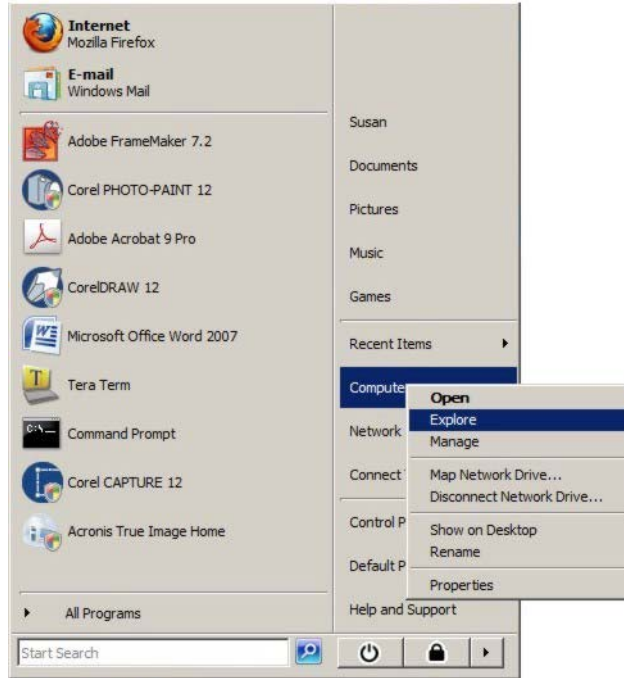


Figure 1 Start - Computer - Explore

4. In the address bar, enter the ftp command:

`ftp://rgb@nnn.nnn.nnn.nnn`

where nnn.nnn.nnn.nnn is the IP address of the Linx switcher.
The example in [Figure 2](#) uses the address 192.168.35.185.

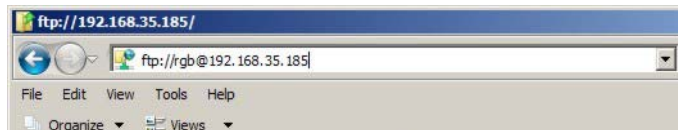


Figure 2 FTP Address Entry

5. Log on with the user name **rgb** and password **spectrum**. Note that both must be entered in lower case.

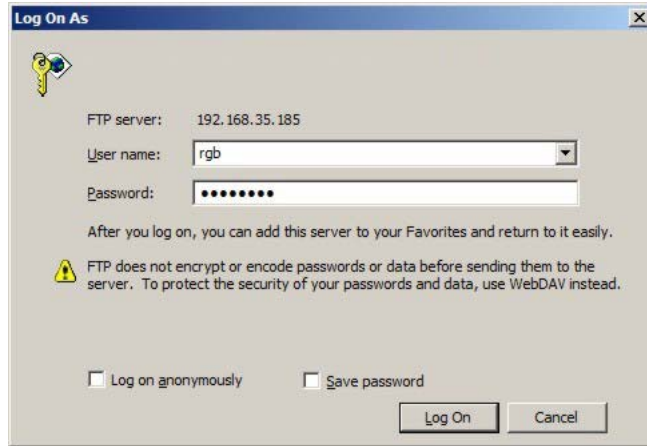


Figure 3 Log On Window

The Linx FTP directory will be displayed in the Explorer as shown in [Figure 4](#).

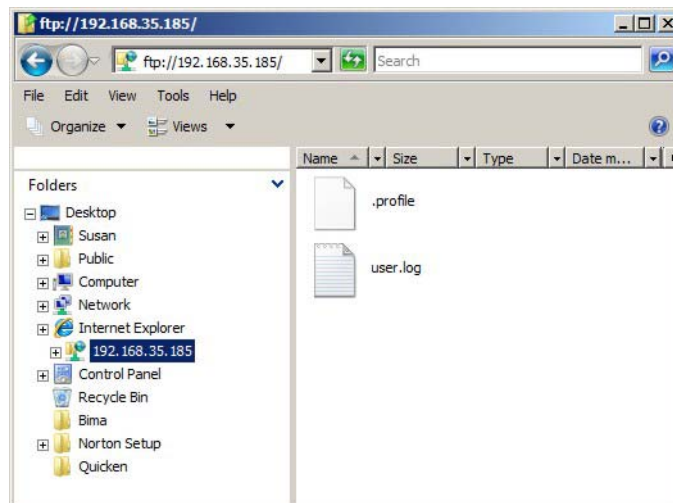


Figure 4 FTP Open

6. Navigate to the location on the computer that contains the firmware file.

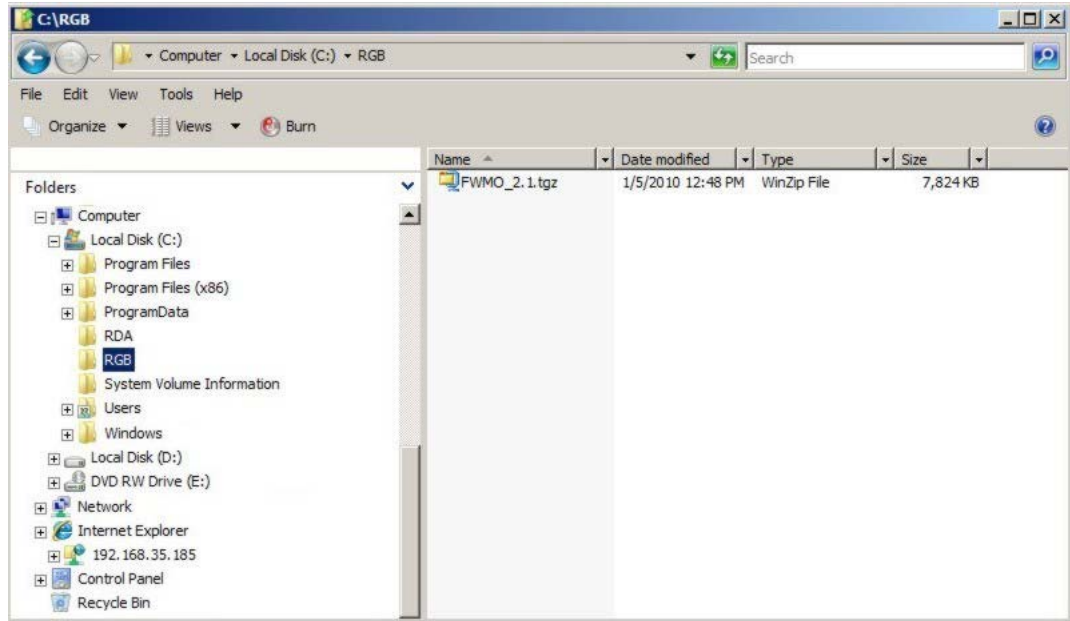


Figure 5 Locate Firmware

7. Select the firmware and drag it to the Linx FTP directory. (If the Log On window reappears, enter the password again and click Log On.) Copy progress is displayed.

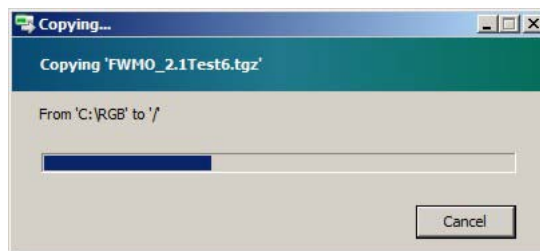


Figure 6 Copying Firmware to the Linx Switcher

- When copying is complete, the firmware will be visible in the Linx FTP directory along with other system files.

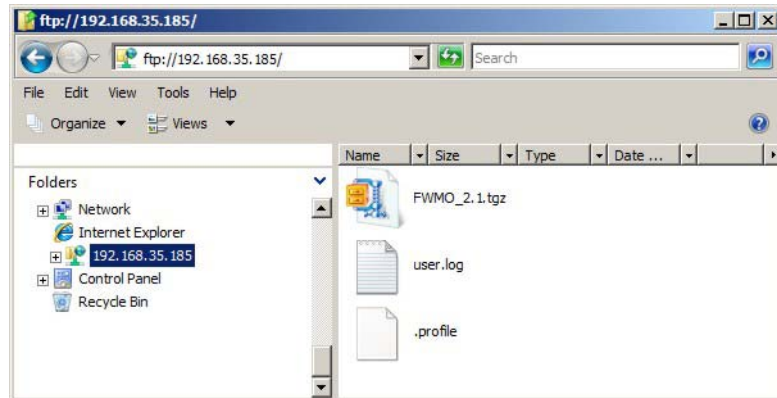


Figure 7 Firmware Uploaded

- Using HyperTerminal through the RS-232 port or Telnet through the 100/1000 BASE-T port issue the UpdateFirmWare (**UFW**) command.

Important

Do not interrupt power to the unit during the firmware update. The update may take as long as 5 minutes.

- Wait until the update has finished (up to 5 minutes). If using Telnet, re-establish communication; for a serial connection, the Linx will return a prompt when complete. Type the **SYSINFO** command. The firmware version listed should match what was just loaded.
- Now execute the UpgradeIOCardFirmWare (**UIOCFW**) command. If using a serial connection, the command prompt will be displayed when the upgrade is complete. If using Telnet over Ethernet, wait 5 minutes before re-establishing a connection with the Linx unit as Telnet over Ethernet will not transfer the messaging data.
- Type **SYSRST** and wait until the switch is fully operational. Allow 5 minutes if using Telnet.
- Type **SYSINFO** and check that the firmware versions listed for the I/O cards match those listed in the release notes. If the versions do not match, repeat the **SYSRST** and **SYSINFO** commands as previously described until they do.
- Execute the UpgradeIOCardFPGA (**UIOCFPGA**) command and wait 5 minutes. If using a serial connection, the command prompt will be displayed when the upgrade is complete. If using Telnet over Ethernet, wait 5 minutes before re-establishing a connection with the Linx.



15. Type **SYSINFO** and check that the firmware versions listed for the I/O cards match those listed in the release notes. If the versions do not match, repeat the **SYSRST** and **SYSINFO** as previously described until they do.

This completes the firmware upgrade procedure. Power-cycle the Linx unit. Presets and EDID files should be unaffected. If they have been corrupted or lost, restore them from the previously saved files on the PC.