



Linx™ Switcher Firmware Upgrade Procedure

This upgrade procedure is applicable to Linx models 800, 900, 1600, 1700, 3200, and 3300. It is recommended that all system settings be exported and copied to a PC before updating firmware.

Please see the appropriate Linx Switcher User's Guide for PC to Linx connection.

1. Determine the current firmware version by one of the following methods:
 - ~ Issue the command **ver** through the serial port or a Telnet window.
 - ~ View the **System** tab of the WCP.
 - ~ On the front panel, touch **SYS** to view the system parameters.
2. Using a browser, download the latest revision of the firmware from the RGB Spectrum web site **Support** section <http://www.rgb.com/Support/> The upgrade is a file named FWMO_x.y.z.tgz, where x.y.z represents the version number. The file name is case sensitive. Copy this file onto a local drive on the PC. The use of a broadband connection is highly recommended. Do not rename the file.

Note

Windows Explorer under Windows Vista is used in the following steps. If using a different operating system, the transfer mode must be set to binary before uploading the firmware to the Linx.



3. From the Windows **Start** menu, right click on **Computer** and select **Explore..**

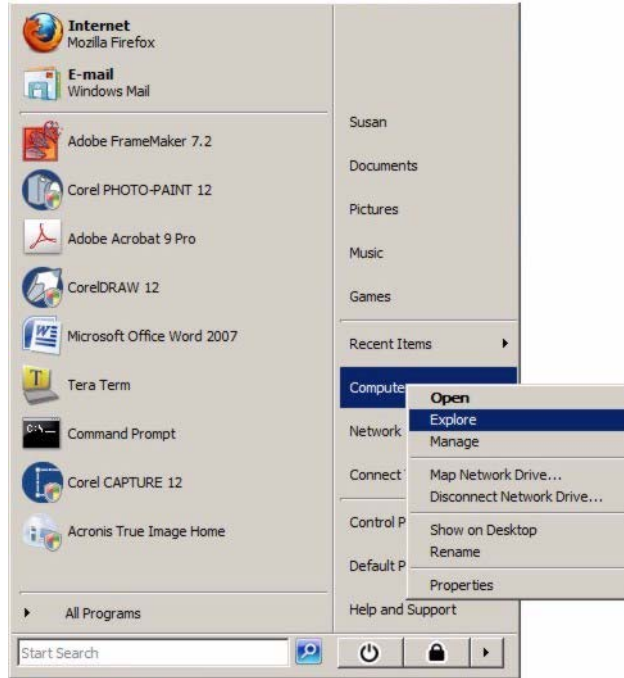


Figure 1 Start - Computer - Explore

4. In the address bar, enter the ftp command:

`ftp://rgb@nnn.nnn.nnn.nnn`

where nnn.nnn.nnn.nnn is the IP address of the Linx switcher.
The example in [Figure 2](#) uses the address 192.168.35.185.

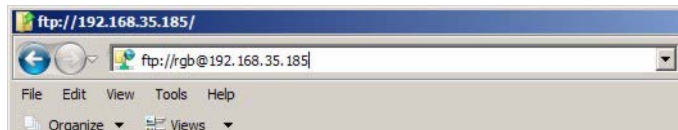


Figure 2 FTP Address Entry



5. Log on with the user name **rgb** and password **spectrum**. Note that both must be entered in lower case.

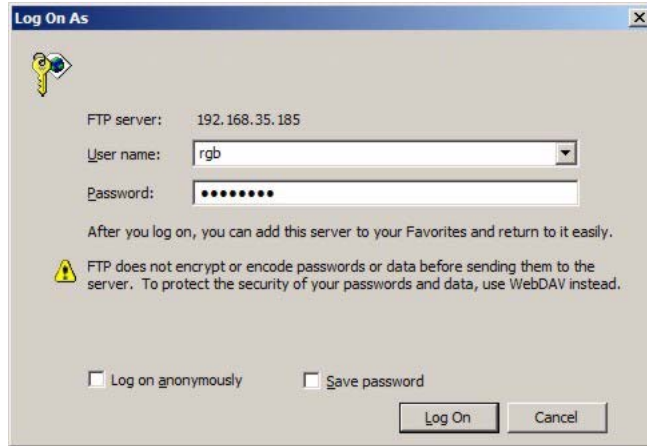


Figure 3 Log On Window

The Linx FTP directory will be displayed in the Explorer as shown in [Figure 4](#).

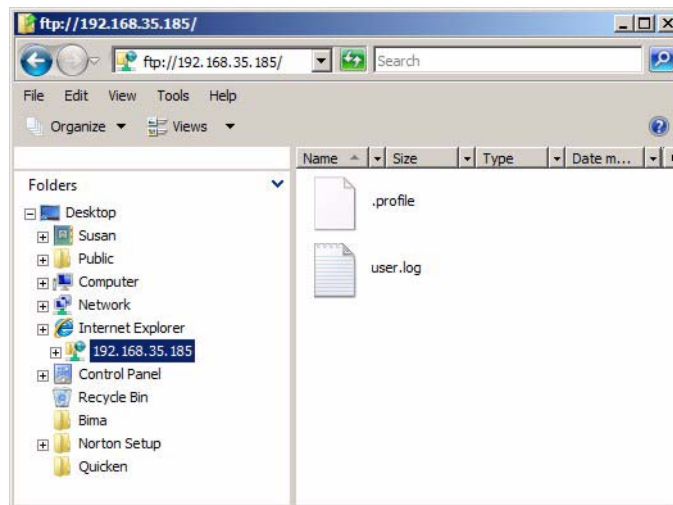


Figure 4 FTP Open

6. Navigate to the location on the computer that contains the firmware file.

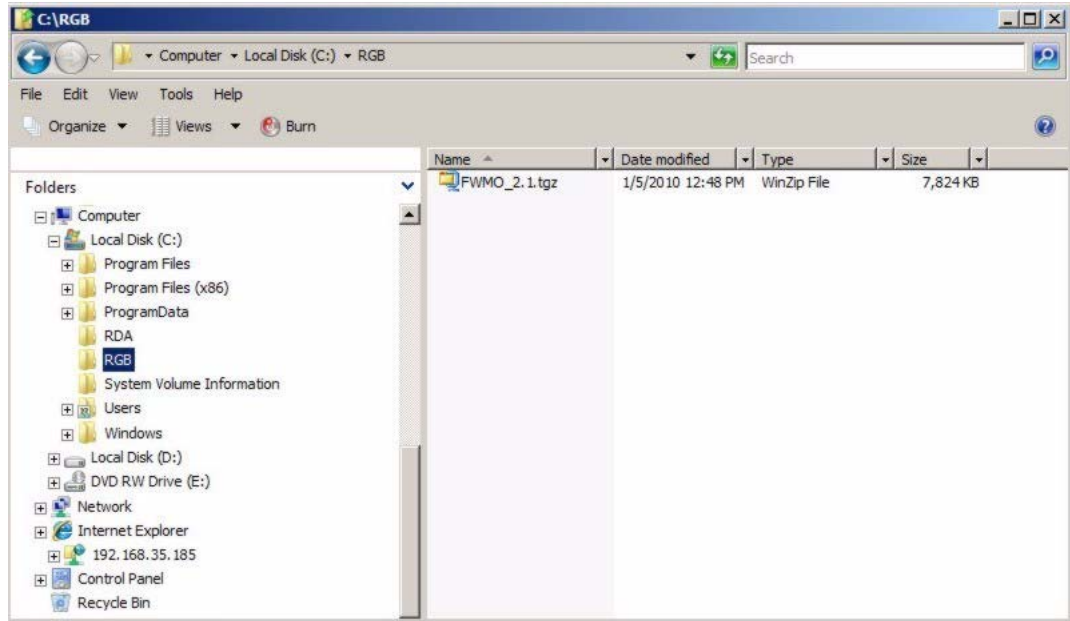


Figure 5 Locate Firmware

7. Select the firmware and drag it to the Linx FTP directory. (If the Log On window reappears, enter the password again and click Log On.) Copy progress is displayed.

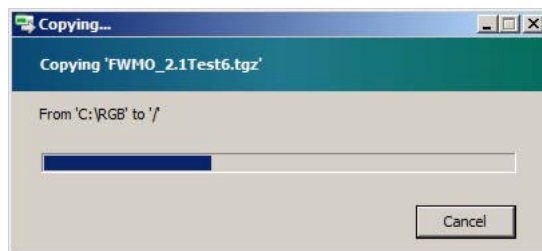


Figure 6 Copying Firmware to the Linx Switcher



8. When copying is complete, the firmware will be visible in the Linx FTP directory along with other system files.

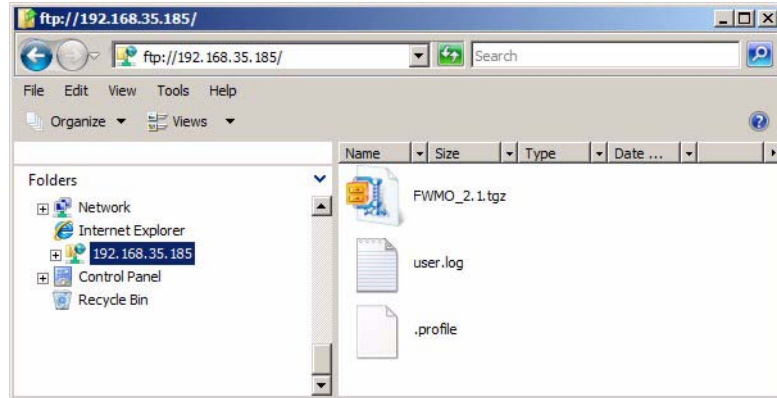


Figure 7 Firmware Uploaded

9. Using HyperTerminal through the RS-232 port or Telnet through the 100/1000 BASE-T port issue the UpdateFirmWare (ufw) command.

Important

Do not interrupt power to the unit during the firmware update. The update may take as long as 5 minutes.

10. Using a HyperTerminal or Telnet session (restart as necessary), execute the UpgradelOCardFirmWare (uiocfw) command.

If using a serial connection, the command prompt will be displayed when the upgrade is complete. If using Telnet over Ethernet, wait five minutes before re-establishing a connection with the Linx unit as Telnet over Ethernet will not transfer the messaging data.

This completes the firmware upgrade procedure. Power-cycle the Linx unit. Presets and EDID files should be unaffected. If they have been corrupted or lost, restore them from the previously saved files on the PC.

Note

Executing the RFD command directly after an update is NOT recommended.