



MultiPoint Control Room Management System (MCMS)

Enterprise Level Control and Collaboration



Any Source, Any Operator, Any Site – One Intuitive Interface

Local / remote resources and operators

Resource integration without custom software

Secure multi-user KVM

Unified control of applications

Drag and drop simplicity





Overview

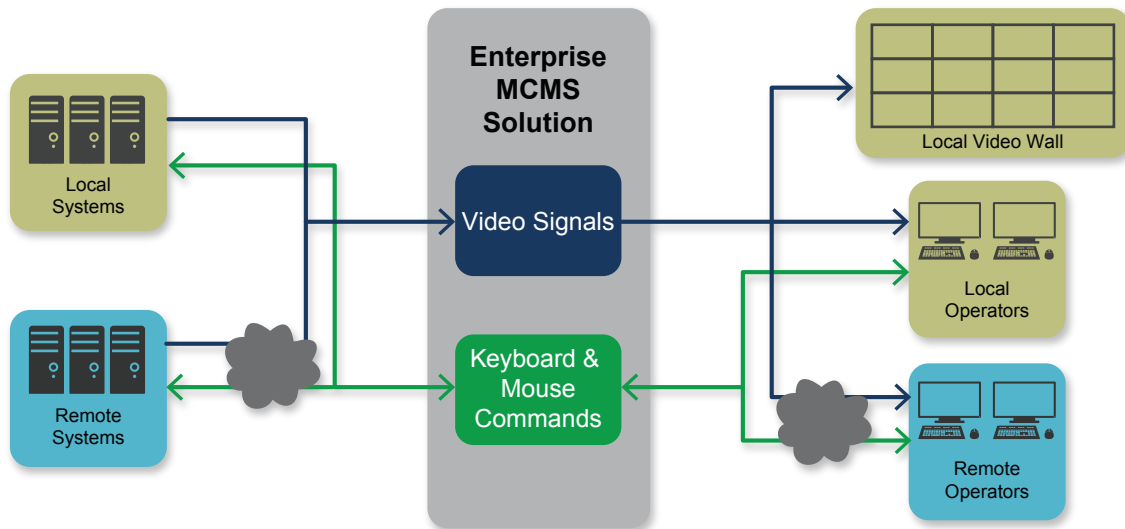
Building on its MultiPoint® Control Room Management System (MCMS), RGB Spectrum's Enterprise MCMS is a powerful control room solution that combines real-time display with multi-user KVM over local or wide area networks.

Enterprise MCMS is an innovative hardware and software platform that integrates disparate systems, both local and remote, without custom software. Enterprise MCMS can even consolidate multiple control rooms, to extend system monitoring and control around the globe.

Designed to operate with 24/7 reliability, the secure, collaborative features of Enterprise MCMS make it ideal for use in a range of mission-critical applications.

APPLICATIONS

- Command and Control Centers
- Security Operations Centers (SOCs)
- Emergency Operations Centers (EOCs)
- Industrial / Process Control
- SCADA System Control

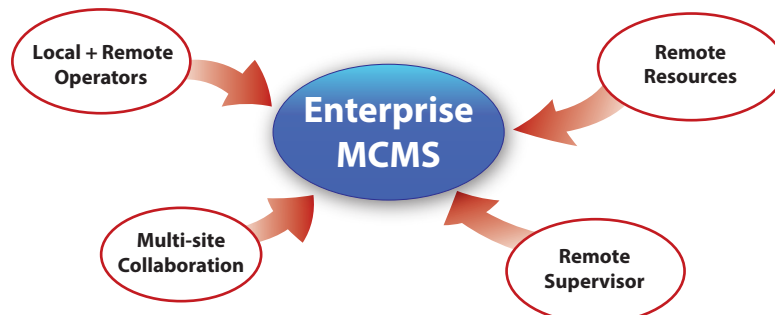


Advanced Technology

Video Desktop Adapter (VDA): ANY SOURCE, ANY OPERATOR, ANY SITE

Enterprise MCMS incorporates proprietary Video Desktop Adapter (VDA) remote desktop technology. This innovative technology adds powerful remote video and desktop control capabilities, extending collaboration capabilities worldwide.

VDA devices utilize adaptive compression technology to provide excellent high motion video as well as clear text and graphics transmission with low latency. The VDA is also highly secure, using AES-256 and NSA Suite B cryptography to ensure the highest level of security over public networks.





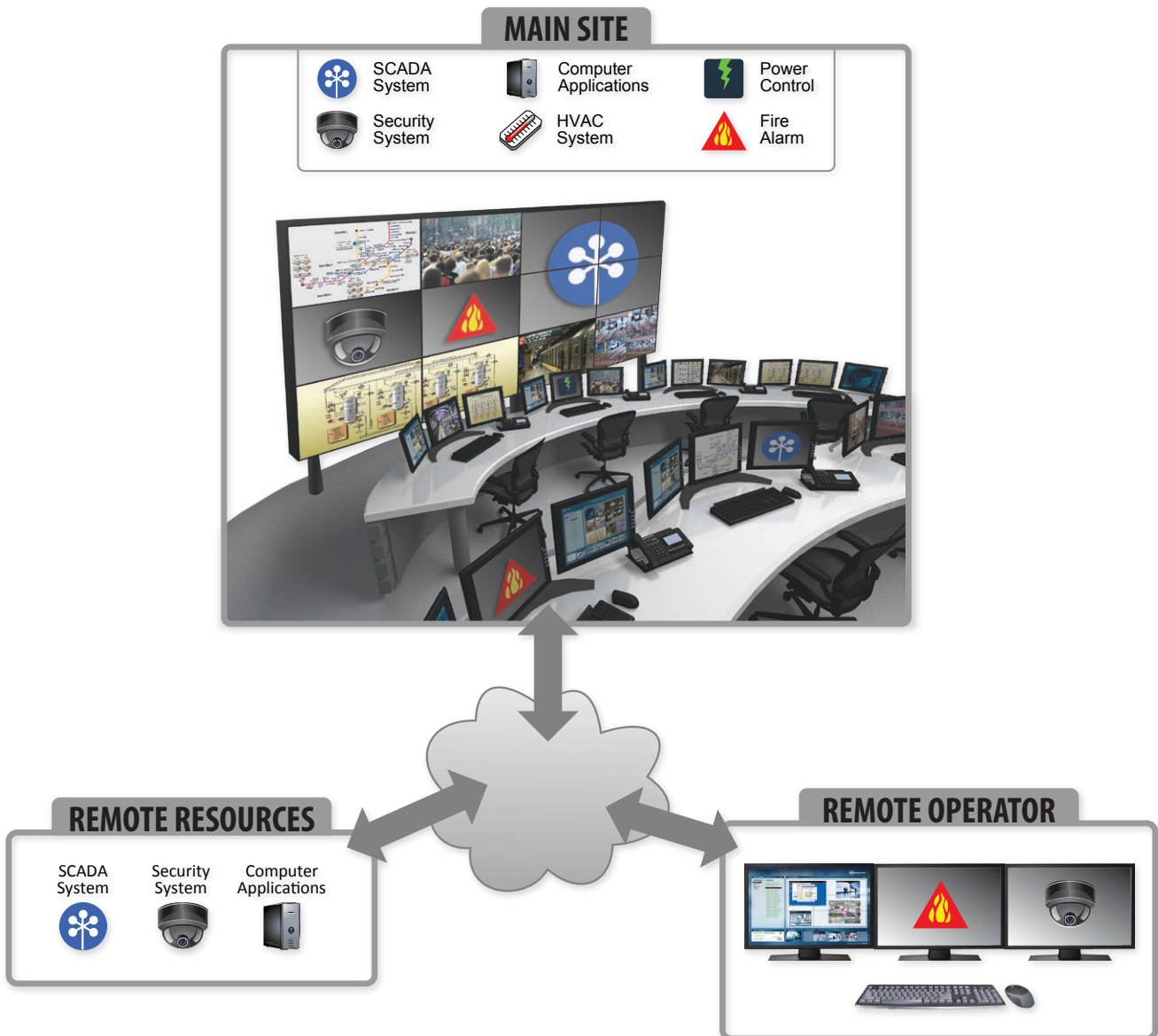
Hybrid Architecture

Enterprise MCMS features a hybrid architecture that combines the signal quality of DVI with the flexibility and security of IP video. Using a dedicated high-speed AV network built on RGB Spectrum's high capacity switching platforms, Enterprise MCMS provides high-resolution signal transmission and full frame rate display performance with only minimal network resources.

Keyboard and mouse control commands are routed over the MCMS network to enable KVM control of local sources, which places almost no burden on the network. To provide operators with visuals from remote sources, KVM control signals are combined with video and transferred over IP using RGB Spectrum's VDA technology allowing both local and remote sources to be displayed at high quality.

CAPABILITIES

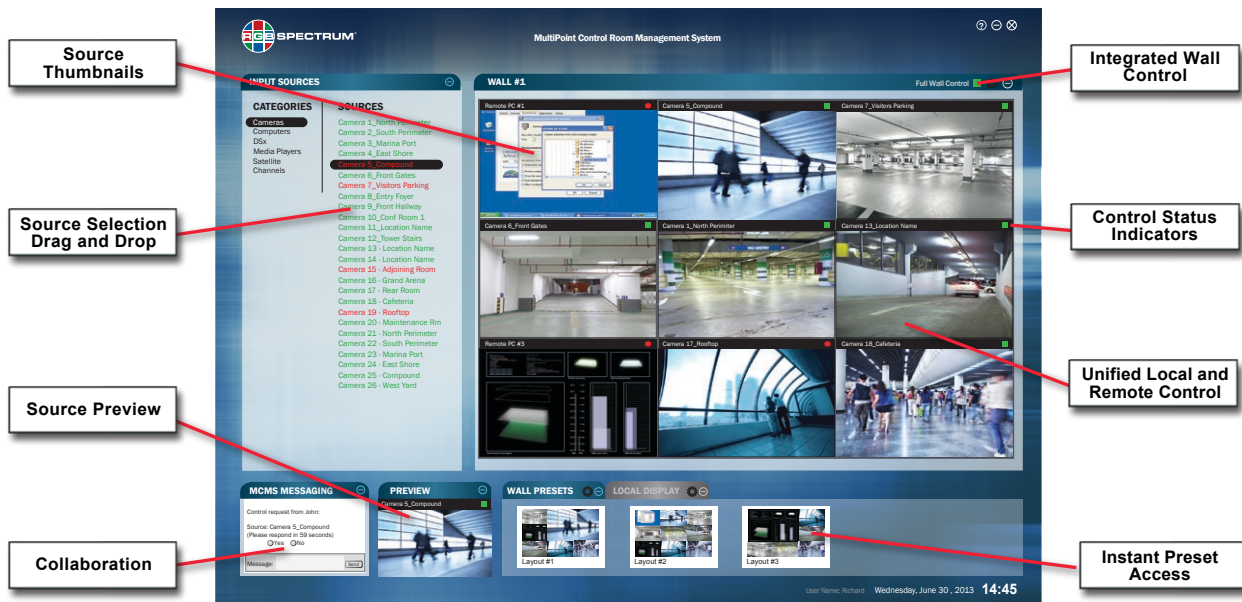
- Up to 32 local / remote control stations
- Manage up to 320 inputs & 320 outputs
- Video wall processing
- Support for remote operators
- Control over remote resources





User Interface

Enterprise MCMS's highly-intuitive graphical user interface (GUI) offers a simple “drag-and-drop” method of placing computer or video sources on control station displays or video wall monitors. The contents of a video wall are represented on a single screen as part of the GUI and may be displayed anywhere in the world. This GUI is the cornerstone of the integrated Enterprise MCMS hardware/software system, making it easy for operators to access resources and share control.



RGB Spectrum's proprietary KlickSimple™ navigation allows seamless mouse and keyboard control across any number of control station monitors or the video wall, allowing them to function as one continuous desktop. With no buttons to push to change control, the hand never has to leave the mouse.



Powerful remote capabilities combined with superb image quality, sophisticated control arbitration tools, and a highly intuitive GUI make Enterprise MCMS the new industry standard for control room management solutions.

Better Decisions. Faster.™



RGB Spectrum Products

Video Wall Processors

Multiple computer and video signals are displayed across an array of monitors or projectors with high quality. Windows can be custom sized, positioned and stretched across any array. An integrated KVM system offers interaction with any source computer.

OmniWall



OmniWall 32



OmniWall 16

MediaWall



MediaWall 4500



MediaWall 4200



MediaWall 2900

- Real-time operation, no dropped frames
- RGB/DVI, 3G/HD-SDI and analog inputs
- Smooth scaling, panning, and zooming
- Edge blending support and bezel compensation
- HDCP compliant

Digital Switchers

The Linx™ and Opto™ series of DVI and fiber optic switchers enable transmission without signal degradation, providing superb tools for A/D conversion, routing and control, with HDCP compliance.

Linx



- Single-link and dual-link DVI, RGB, 3G/HD-SDI inputs
- Single and dual-link DVI and scaled DVI outputs
- Fiber and copper I/O
- Chassis I/O up to 32x32

Opto



- Industry highest bandwidth - 6.22 GHz
- Chassis I/O up to a giant 320x320
- Simplex or duplex operation
- Single mode or multimode fiber
- Single and dual-link DVI, RGB and 3G/HD-SDI

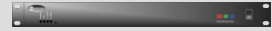
Multiviewers

For displaying multiple video and graphics on a single screen, the QuadView® and SuperView® product lines provide superb multiviewer functionality with the ability to move, resize and overlap images. Options include KVM control of sources, and HDCP compliance.

SuperView 4100 / 5000



QuadView HDx



- 4, 8, or 12 windows
- DVI, RGB, HD-SDI, SD/HD video inputs
- Resolutions to 1920x1200
- Smooth scaling, panning, and zooming

SuperView 4K



- 8 megapixel multiviewer
- Up to 8 windows
- DVI single-link or dual-link output
- Smooth scaling, panning, and zooming

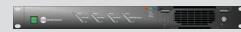
Codecs and Recorders

For streaming and recording video, graphics and audio with the highest fidelity, RGB Spectrum offers two codec families — the DSx™ with H.264 high profile compression and the DGy™ with JPEG 2000 compression.

DSx



DGy



- Up to 1920x1200 resolution
- Simultaneous recording and replay
- Event marking
- Variable speed playback
- Multi-unit synchronization
- Concurrent streaming and recording
- Recording to local and network storage devices

Extenders

For secure transmission of DVI signals over long distances, XtendView® FiberDVI signal extenders represent the state-of-the-art with the industry's smallest size housing.



- Up to 400M over a single fiber
- Resolutions to 2048x1152
- "All-in-the-headshell" design
- HDCP compliant



Worldwide Offices

Corporate Headquarters

950 Marina Village Parkway
Alameda, California 94501
TEL: (510) 814-7000
FAX: (510) 814-7026
WEB: www.rgb.com
email: sales@rgb.com

European Headquarters

Dragonder 20A
5554 GM Valkenswaard
The Netherlands
TEL: +32 11 515600
FAX: +32 11 515601
CELL: +31 6 51319730
email: europesales@rgb.com

Asian Headquarters

14 F Cimic Tower
800 Shang Chang Rd. Pudong District
200120, Shanghai, China
TEL: +86 10 5905 5776
FAX: +86 10 5905 5900
CELL: +86 1391 6213 594
email: asiasales@rgb.com

USA Offices

Somerset, New Jersey
Baltimore, Maryland
Atlanta, Georgia
Orlando, Florida
Cincinnati, Ohio
Dallas, Texas
Los Angeles, California

Middle Eastern Headquarters

Yes Business Center, Suite 302
14B Street, Al Mafrq Road
Al Barsha 1, Dubai
United Arab Emirates
TEL: +971 (0) 44 46 84 16
CELL; +971 (0) 50 420 3867
email: middleeastsales@rgb.com
africasales@rgb.com

International Offices

Paris, France
Shanghai, China
Seoul, Korea
Mumbai, India
St. Petersburg, Russia
Miami, Florida for Latin America
Beirut, Lebanon
London, UK
Dubai, UAE



Specifications subject to change without notice
©2014 RGB Spectrum