



## FOUR COMPUTER AND VIDEO SOURCES ON A SINGLE SCREEN

### QUADVIEW XL

#### 4 Window Real Time Display Processor

**4 Window Display**

**RGB, HDTV, S-Video,  
NTSC/PAL Inputs**

**Smoothly Resize and  
Position Inputs**

**Ethernet and RS-232  
Control**

**Web Operation**

**Any Aspect Ratio**

**Fades**

**Colored Backgrounds**

**Titles and Borders**

**Compact 1 RU Chassis**

**RGB and DVI Outputs**

**Pan and Zoom**

**Presets**

**Optional DVI Inputs**

The QuadView<sup>®</sup> XL offers the most powerful image processing available from RGB Spectrum, with outstanding image quality, plus new features such as web-based control, dynamic window sizing, borders and titling, smooth zoom/pans and more, the QuadView XL is ideal for any application requiring display of multiple images on a monitor or projector.

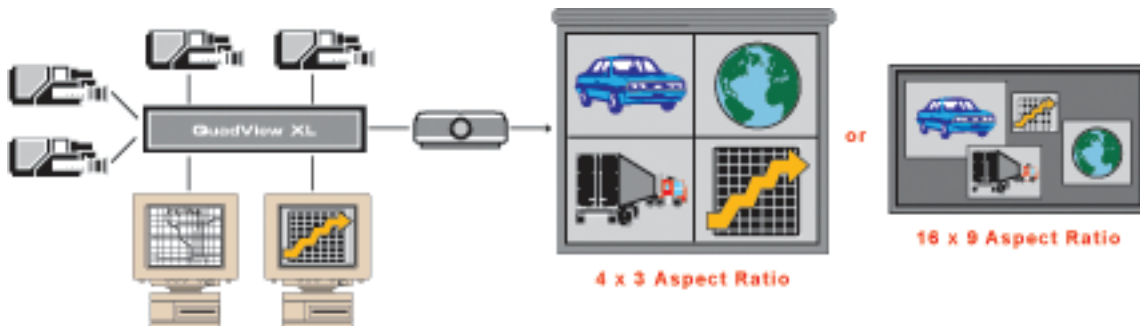
The QuadView XL accepts high resolution RGB, HDTV, S-Video, component and NTSC/PAL composite video, and optional DVI inputs. Up to sixteen sources can be connected, four of which can be displayed simultaneously.

Each input can be sized and positioned anywhere on the screen, as well as panned and zoomed to emphasize areas of particular interest. Display alternatives are virtually infinite, and include quad split, side-by-side, picture-in-picture, and overlapping windows. The QuadView XL supports real time, dynamic movement and resizing of windows.

User-selectable output settings up to 1920 x 1200 resolution in RGB and 1600 x 1200 resolution in DVI format ensure a perfect match with any display. With DVI inputs and outputs, a completely digital signal path can be maintained from signal source to display. For added convenience, dual outputs in both RGB and DVI format allow feeding two separate displays.

All functions are easily set up and controlled using a command line interface from either the RS-232 or Ethernet ports, or graphically via a standard web browser.

Built on RGB Spectrum's long tradition of quality and reliability, the QuadView XL is an excellent solution for all multimedia display, including the most demanding mission critical applications.



Control Rooms

Network Operations Centers

Video Teleconferencing

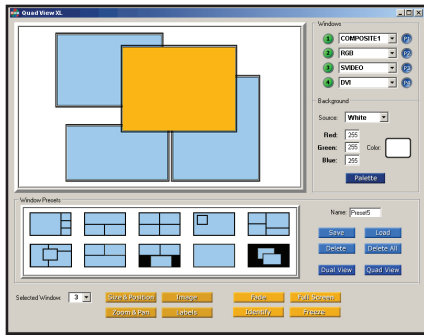
Air Traffic Control Towers

Medical Operating Rooms

Security / Surveillance

Boardrooms

Training Facilities



**QuadView XL Web Interface**

Operate the QuadView XL processor remotely from any web browser, using an intuitive “click and drag” interface

**Specifications**

**Input Signals**

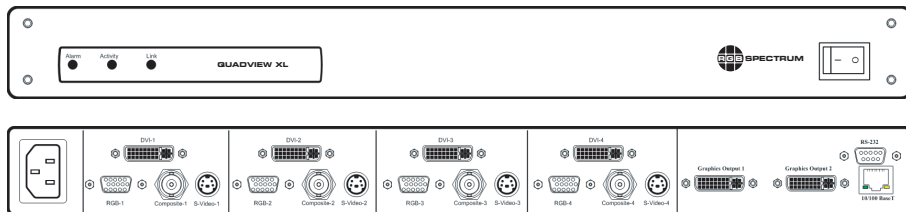
Type / Number	4 x RGB / Y P <sub>b</sub> P <sub>r</sub> / HDTV 4 x DVI (optional) 4 x Composite 4 x S-Video (configurable as 4 x Composite)
Resolution	RGB: 640 x 480 to 1920 x 1200 DVI: 640 x 480 to 1600 x 1200 720p and 1080i HDTV
Horizontal scan rate	12 kHz to 125 kHz interlaced or non-interlaced
Frame rate	Up to 200 Hz
Video levels	0.7 V p-p
Sync type	Sync on green, separate composite sync, or separate H-drive and V-drive
Connectors	RGB: 15-pin HD D-Sub (female) DVI: 29-pin DVI-I (optional) Composite: BNC (female) S-Video: 4-pin mini DIN (female)

**Output Signals**

Type / Number	2 x RGB analog 2 x DVI digital
Resolution	640 x 480 to 1920 x 1200 pixels @ 60 Hz
Horizontal scan rate	12 kHz to 125 kHz interlaced or non-interlaced
Frame rate	Up to 200 Hz
Video levels	0.7 V p-p
Sync type	Sync on green, separate composite sync, or separate H-drive and V-drive
Connectors	Analog and digital: 29 pin DVI-I

**Other**

Power	90 - 264 VAC auto range 47 Hz - 400 Hz Less than 65 W
Control	Ethernet 10 / 100 BASE-T RS-232 Web interface
Size	1 RU Width 17.25" (43.8 cm) Depth 15.3" (38.9 cm) Height 1.75" (4.5 cm)
Rackmount	Rackmount kit included
Weight	Approximately 14 lbs. (6.3 kg)



**Front and Rear Panels with Optional DVI Inputs**